

Cornerstone Homes

of RICHMOND HILL



Built by:

Miller
FRED
CONSTRUCTION, INC.

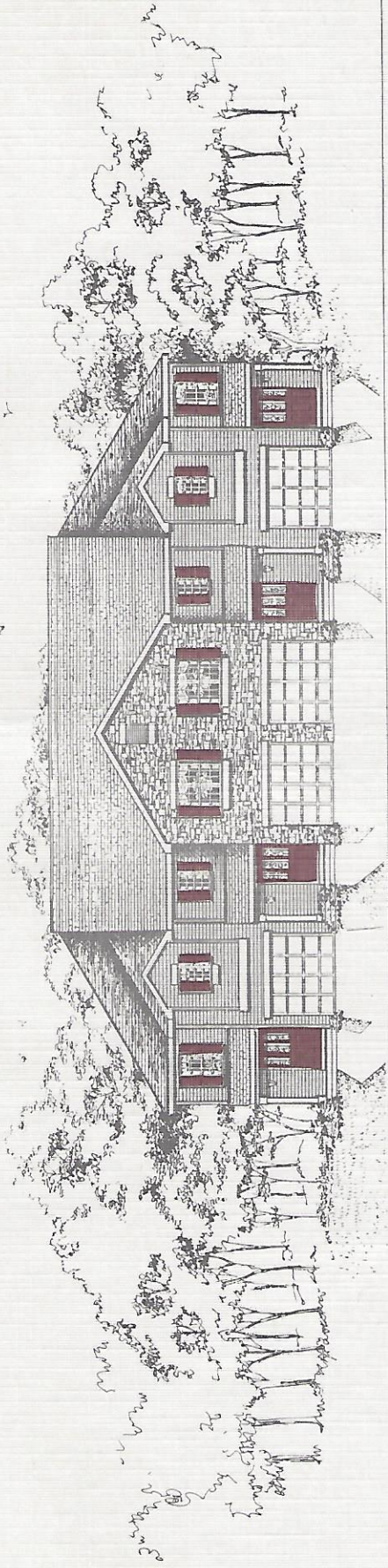
*Scenic, Sophisticated & Exceptionally Affordable
Two & Three Bedroom Luxury Townhome Condominiums*

Offered by:



FIRSTWEBER
Group, Inc.
REALTORS

CALL COLLEEN ASMUSSEN, 241-8323 or 241-0050



Dreams Do Come True.... Nestled In The Corner Of Undisturbed Natural Beauty And The Prestige of Richmond

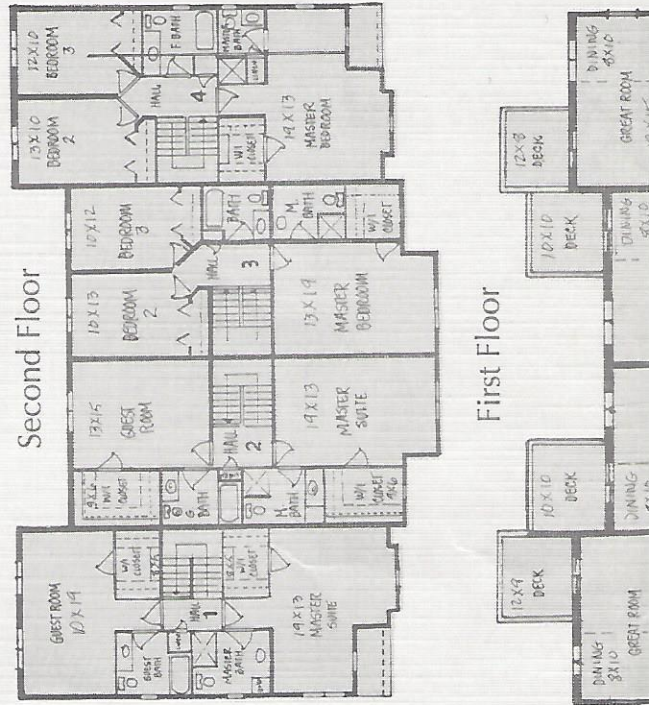
Hill, You'll Find Cornerstone Homes Bring Affordability To Luxury Living.

FEATURES

- 40 Units
- Prime Location, Easy Access To All Major Highways
- Four Unique Floor Plans
- Private Entry
- Appliances Included
- Central Air
- Great Room
- 2-1/2 Baths
- Cultured Marble Vanity Tops

OPTIONS

- Your Choice Of Oak Trim And Flush Oak Doors Or Painted Trim With Six Panel Doors
- Water Softener
- Lower Level Fireplace
- Lower Level 19 x 15 Family Room
- Lower Level 1/2 Bath
- Garage Door Opener

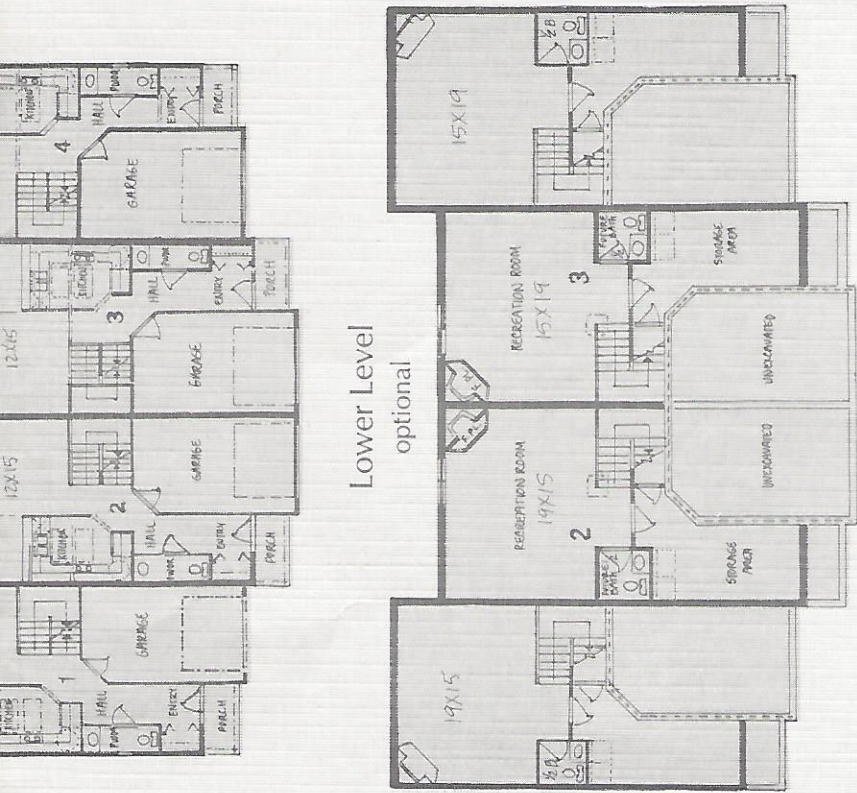


LOCATION

East of Highway 51 on Buckeye Road to Richmond Hill. Turn Right on Dell Drive to CORNERSTONE HOMES Of Richmond Hill.

Centrally located for convenient commutes to East Madison, West Madison, the Interstate and Hwy. 12 & 18.

Prices Starting at \$99,900.



- Walk-In Closets
- Deck
- Low-E Energy Efficient Windows
- Energy Efficient Furnace
- R-40 Insulation
- R-19 Sidewalls
- Silent Floor System
- Handicapped Accessible
- Condo Fee — \$65
- Generous allowances for choosing your own colors, trim, carpeting & appliances. Customize your new home to your specific preferences.

Affordable Two & Three Bedroom Luxury Townhome Condominiums — Located In The Prestige Of Richmond Hill

Cornerstone Homes

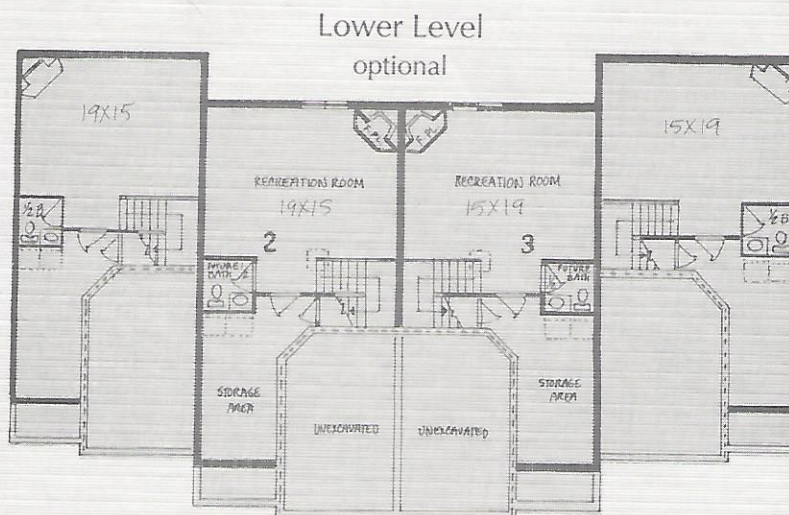
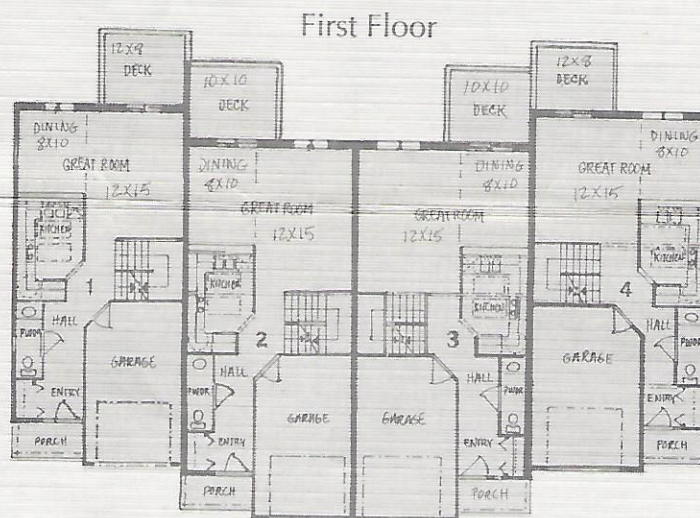
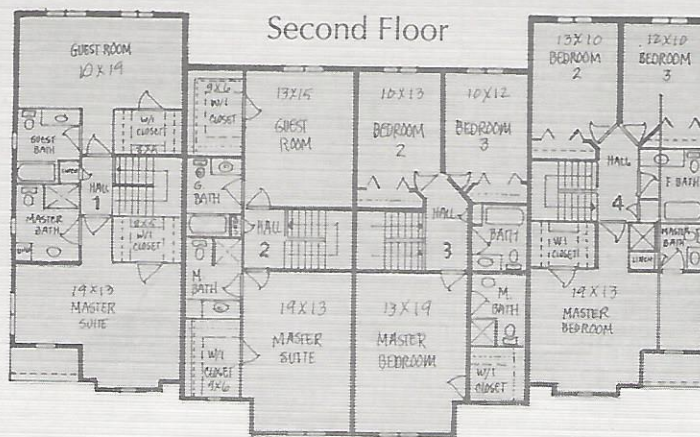
of RICHMOND HILL



BUILT BY FRED MILLER CONSTRUCTION, INC., MADISON, WI

FEATURES

- 40 Units
- Prime Location, Easy Access To All Major Highways
- Four Unique Floor Plans
- Private Entry
- Appliances Included
- Central Air
- Great Room
- 2-1/2 Baths
- Cultured Marble Vanity Tops
- Private Master Bath
- Walk-In Closets
- Deck
- Low-E Energy Efficient Windows
- Energy Efficient Furnace
- R-40 Insulation
- R-19 Sidewalls
- Silent Floor System
- Handicapped Accessible
- Condo Fee — \$65
- Generous allowances for choosing your own colors, trim, carpeting & appliances. Customize your new home to your specific preferences.



OPT

- Your Choice Flush Oak D Trim With S
- Water Soften
- Lower Level
- Lower Level Family Room
- Lower Level
- Garage Door

LOCA

East of Highway Buckeye Road t Hill. Turn Right to CORNERSTO Of Richmond H

Centrally locate convenient com Madison, West I Interstate and H

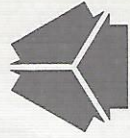
Prices Starting at

Affordable Two & Three Bedroom Luxury Townhome Condominiums — Located In The Prestige Of Richmond

• Cornerstone Homes •

Dreams Do Come True...

Offered by:



FIRSTWEBER
Group, Inc.
R E A L T O R S

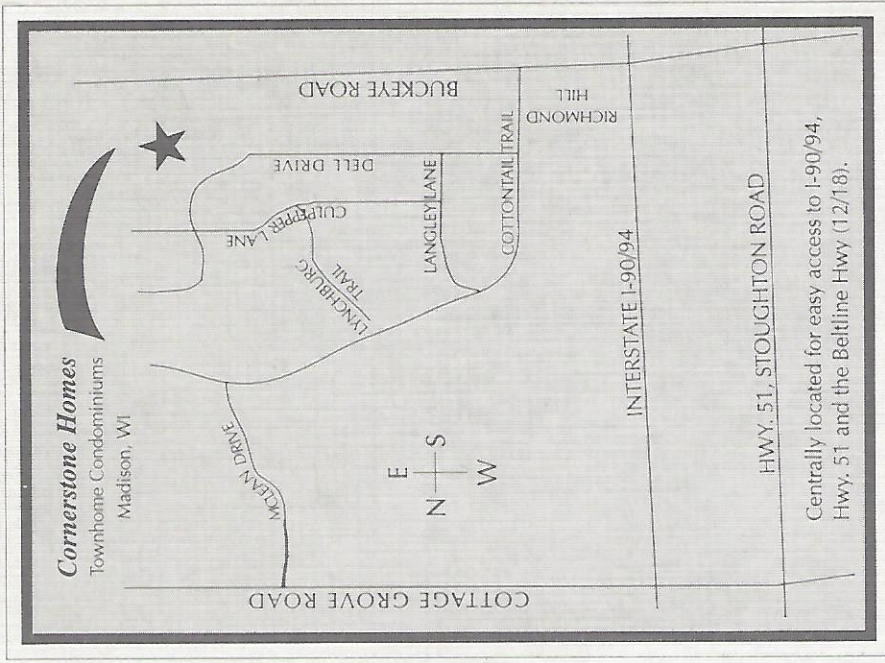
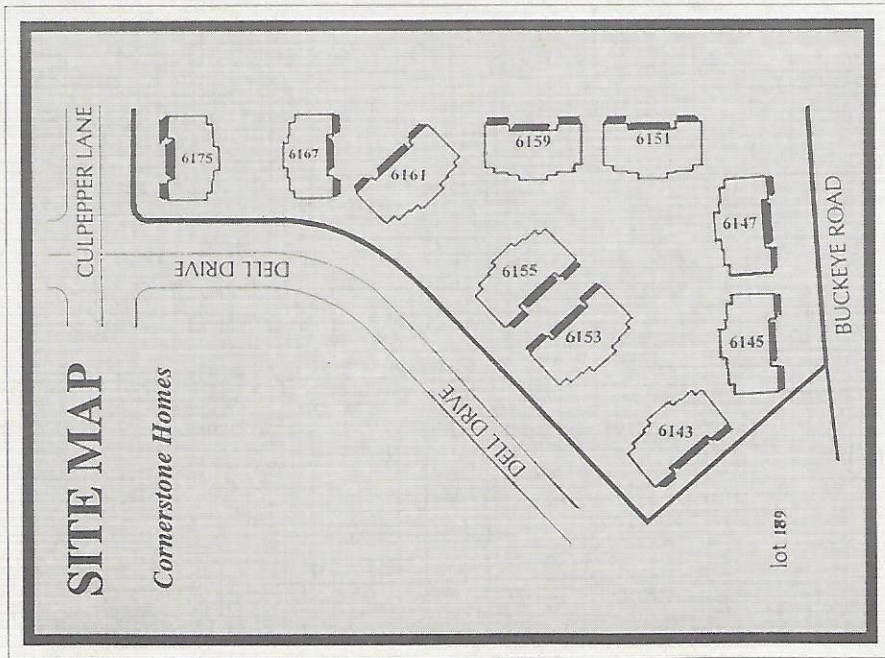
call:

COLLEEN ASMUSSEN

241-8323

or

241-0050



Centrally located for easy access to I-90/94,
Hwy. 51 and the Beltline Hwy (12/18).

Cornerstone Homes

of RICHMOND HILL



Scenic, Sophisticated & Exceptionally Affordable Two & Three Bedroom Luxury Townhome Condominiums

BUILT BY FRED MILLER CONSTRUCTION, INC., MADISON, WI